

Annual Review 2019



**Museums
& Galleries
of NSW**

Acknowledgment of Country

Museums & Galleries of NSW acknowledges the Gadigal people of the Eora Nation and all the other Traditional Custodians of the lands on which we live and work.

We pay respect to them as First Nations people with continuing connection to land, place, waters and community.

Contents

2	What We Do
3	Staff and Board
4	CEO & Chair Report
5	Highlights
6	Partnerships
9	Aboriginal Programs
11	Touring Exhibition Program
21	Engaging Art
23	Professional Development
27	Grants and Funding
35	Regional Museum Advisors Program
36	Standards Review Program
37	IMAGinE Awards
40	Communications
42	Finances



What We Do

Museums & Galleries of NSW advocates for and supports small to medium public museums and galleries in NSW.

Our Purpose:

Is to support small to medium galleries, museums and Aboriginal cultural centres in NSW to maximise their impact and help create strong and thriving local communities.

Our Values:

Respect for Aboriginal people and their right to cultural ownership and more generally for their diversity of opinion and knowledge.

Relevance to contemporary cultures, government policy, industry, community and sector needs.

Collaboration to develop and deliver services.

Inclusivity of diversity of practices, range of knowledge, access, disability and special needs.

Integrity, be trustworthy, accountable and transparent.

Our Methods and Outputs, or what we do:

M&G NSW uses four key Methods to assist museums, galleries, artist run initiatives and Aboriginal cultural centres to maximise their cultural impact within communities and across the State.

The four Methods used are:

1. Services – providing programs and support

These include the promotion of sector organisations to the public, touring exhibitions, capacity building programs, formal and informal learning opportunities, skill development workshops, seminars and events.

2. Resources – advice, fact sheets and small grant funding

These include a range of alternative and targeted funding opportunities, for small and large projects, and widely used 'on-demand' text and rich media practical guides, case studies and research reports undertaken for and about the sector

3. Connections – enhancing direct and social media communication

Our programs create and provide opportunities for people to connect face to face and remotely using technology and social media

4. Governance – promoting transparency, accountability and integrity

We observe strong Governance to ensure stability, sustainability, transparency and accountability. This keeps the organisation connected to its agreed KPI's, with purposeful Board engagement, managed risk and financial health.

Staff and Board

M&G NSW Staff 2019

Chief Executive Officer

Michael Rolfe

Administration and Finance

John Thompson

Gallery Programs and Touring Exhibitions

Rachel Arndt

Olivia Welch

Susan Wachter

Museum Programs and Collections

Tamara Lavrencic

Jordan Cavanaugh (resigned 2019)

Emily Cullen (appointed 2019)

Aboriginal Sector Programs

Steve Miller

Melissa Abraham

Communications

Jason Gee

Emily Phipps (resigned 2019)

Vanessa Low (appointed 2019)

Programs and Events

Dale Maxwell-Smith

M&G NSW Board 2019

Ray Christison (Chair)

Michael P Braybrooks OAM

Phil Gordon

Susi Muddiman OAM

Rebecca Olejnik

Louise Silburn

Kevin Sumption

Frank Zaknich

CEO & Chair Report

Another busy and successful year for the Museums & Galleries of NSW (M&G NSW) team again saw a range of ongoing programs and sector development work undertaken. We continued to support Create Infrastructure's digitisation program development and planning for the Collections and Stories website. M&G NSW also worked closely with local Government NSW (LGNSW) to successfully present a motion to its annual conference in support of the development of a Museum Strategy for NSW. Further developments across both these involvements are expected during 2020.

At the 2019 AGM, and after a successful 4-year term, Dr Jennifer Barrett stood down as Chair and from the M&G NSW Board. Ray Christison was subsequently elected as Chair. The respect and leadership Jennifer brought to the organisation is matched by Ray's significant professional profile and broad networking commitment to, and knowledge of, the sector served. At its August meeting the M&G NSW Board adopted its first Diversity Statement, including goals that will focus on:

- Leading and managing inclusively – embracing NSW Aboriginal people, and others representing different cultures, genders, sexual orientations, ages and disabilities.
- Creating a work environment that fosters growth and advancement.
- Engaging with museums, galleries and Aboriginal cultural centres, and their audiences, in a way that reflects and respects their different perspectives and experiences.

From Board leadership through staff, peer panel and reference committee involvement, our skills, knowledge and program activity represent the needs of our state-wide activity, governance framework and diversity of who we work with.



Michael Rolfe
CEO, M&G NSW

Highlights

- **M&G NSW toured nine visual arts exhibitions** which travelled to 13 regional NSW venues as well as 11 venues in four other states. They showcased the works of 42 living artists, included over 208 artworks and were seen by more than 120,000 people.
- **Our regular 2019 Professional Development Program** was delivered free or at low cost to participants with support from a number of partners, including: Museum Applied Arts & Sciences, Artspace, Artbank Sydney, Local Government NSW, Australian Museums & Galleries Association NSW (AMaGA NSW) and Regional Public Galleries of NSW Inc (RPG NSW). M&G NSW ran and contributed to 9 individual professional/skills development events attracting 768 participants.
- **The Collections and Stories project** continued and in late 2019 included the launch of a new digitisation resource *Crystal Clear: standards and guidance for digitising regional collections*.
- Research to support the **regional collection digitisation project** was supplemented with additional data gathering around sector wide collection management software use and completion of a new (5 year) **sector-wide census, published in early 2019**.
- In its 4th year the **Audience Development Fund (ADF) grant program devolved \$45,000** across five galleries in NSW, three of which were regional.
- Through the **Mentorships, Fellowships and Volunteer Placements program, \$20,000** was devolved to support an international fellowship, six mentorships to paid museum and gallery staff, and two museum volunteer placements, with recipients from across the State.
- **Volunteer Initiated Museum (VIM) grant program** received 49 applications and awarded \$78,808 to 40 museums in 29 local government areas.
- **The Dobell Exhibition Grant of \$40,000**, funded by the Sir William Dobell Art Foundation, was awarded to Murray Art Museum Albury (MAMA) for their proposed exhibition *Notes from the Field*, to be held in 2020.
- Heritage NSW again supported the **Environmental Assessment and Remedial Building Work grants**. 12 applications were received and 8 were supported across both these programs.
- **The Standards Program** ran as a non-regional model again, working with four museums/galleries, to strengthen the museums' practices and sustainability. The program engaged with 27 volunteers.
- Supporting 78 museums/collecting organisations in 17 local government areas, the **Museum Advisor Program** continued to assist the work of over 1,000 volunteers through the provision of advice and specialist skills.
- M&G NSW continued its secretariat support for the **NSW Aboriginal Culture, Heritage & Arts Association (ACHAA)** which represents Aboriginal cultural venues around the state. Two conferences were organised in 2019, one with generous support from the State Library of NSW and the other at the Armidale Aboriginal Cultural Centre. New members in 2019 include the Monaroo Bubberer Gudu Keeping Place, the Burrinja Gallery (part of Murray Arts) in Albury, Museum of Contemporary Art, Parramatta City Council, the Museum of Art and Culture at Lake Macquarie, and the Jervis Bay Maritime Museum.
- M&G NSW continued its **Reconciliation Action Plan** by engaging staff and Board with relevant news and issues fortnightly.
- In partnership with RPG NSW, AMaGA (NSW), and the Museum of Applied Arts and Sciences, M&G NSW presented the 12th annual **IMAGinE Awards** in November 2019.
- **A refresh of the M&G NSW website was completed**, with a revised design and functionality using a WordPress CMS. In 2019, there were 344,987 visits to the website; with 241,212 unique users. Visitors from NSW made up 62.5% of all traffic, a 2.5% increase on the previous year. We had a total of 682,601 pages viewed, an increase of 38,724 (6%) on the previous year. The sector-focused e-news, Alert, continued to have a high engagement rate from its 3,751 subscribers.



Above Local Government NSW roundtable meeting with museum staff employed by local government.

Partnerships

Partnerships continue to be a key strategy for M&G NSW to diversify support for the sector and programs run.

- In 2019, M&G NSW partnered with the **Local Government NSW (LGNSW)** for two roundtable meetings with museum staff employed by local government. The number of attendees across the two meetings was 43. The partnership with Museums & Galleries Queensland (MGQ) on the Standards Program, now in its 13th year, continued to strengthen the relationship between the two organisations.
- Partnerships with local government continued to grow with financial support provided for the **Standards Program and the Museum Advisor Program** enabling over 20 local government areas to be involved.
- **Sydney Living Museums, Australian Museum, Art Gallery of NSW, Museum of Applied Arts and Sciences and NSW State Archives and Records** continue to support and work with M&G NSW in the delivery of professional development programs, provision of expertise and venues that in turn support the small to medium sector.
- A new partnership in 2019 with the **Museum and Heritage program at the University of Sydney** will contribute scholarly research towards M&G NSW's work in cultural mediation and the opportunity for audience engagement and impact across the sector.
- Other partnerships with regionally based and Western Sydney cultural institutions, such as **Campbelltown Arts Centre, Casula Powerhouse Arts Centre, Bathurst Regional Art Gallery, Goulburn Regional Art Gallery and Murray Art Museum Albury** continued in 2019.
- Partnerships with presenting organisations such as **4A Centre for Contemporary Asian Art, Artspace, UTS Art and UNSW Galleries** were grown and revitalised, with several attracting significant project funding through **Create NSW, Visions of Australia and Australia Council** sources.
- A new partnership was established for the development of a national touring project with significant cultural institutions **Carriageworks, Australian Centre for Contemporary Art, Melbourne, Museum of Old and New Art, Hobart** launching in 2021.





Left ACHAA delegates gather in Armidale for 2019 Conference

Above Steve Miller speaks at the opening of M&G NSW touring exhibition *Void* at Bathurst Regional Art Gallery

Previous page and opposite Smoking Ceremony at the opening of M&G NSW touring exhibition *Void* at Bathurst Regional Art Gallery

Aboriginal Programs

The Museums & Galleries of NSW Aboriginal Programs team focused again in 2019 on support to the NSW Aboriginal Culture, Heritage & Arts Association Inc (ACHAA) through secretariat and co ordination of programming.

For the second consecutive year, ACHAA held two gatherings in 2019, one in conjunction with a Sydney Institution (State Library of NSW) and one at a regional ACHAA Member's venue (Armidale & District Aboriginal Cultural Centre & Keeping Place).

The Sydney gathering was held on 7 and 8 March and was supported financially by the State Library, allowing ACHAA members to attend from as far away as Walgett, Wilcannia and Trangie. Issues affecting members were discussed on Day One and the Strategic Action Plan updated. The State

Library presented its services and Indigenous Engagement Team on Day Two and discussed ACHAA members' needs around collection management and care.

The Armidale conference was hosted by ACCKP Chair Rose Lovelock, Director Daisy William and Curator Bevan Quinlan. It gave members an opportunity to view the new gallery space and attend exhibition openings timed with the conference. Regional speakers presented on their cultural enterprises alongside member presentations and guest speakers from the Indigenous Art Code and the Copyright Council. The program also included the ACHAA Annual General Meeting and the presentation of the Annual Report.





Left Marion Buchloch-Kollerbohm, Head of Cultural Mediation at the Palais de Tokyo (Paris, France) facilitates a workshop, featuring Mel O'Callaghan's exhibition *Centre of the Centre*, Artspace, Sydney 2019

Touring Exhibition Program

M&G NSW produced and toured nine exhibitions of contemporary practice across Australia and the state. Overall, these exhibitions travelled to 13 NSW venues and 11 venues in four other states and territories. They showcased the works of 42 living artists and included over 208 artworks seen by more than 129,511 people.



Top left Tracey Moffatt and Gary Hillberg *Montages: The Full Cut 1999–2015*, installation view at Anne & Gordon Samstag Museum of Art, University of South Australia, 2018. Photo by Sam Noonan. *Montages: The Full Cut, 1999 – 2015* was curated and developed by Artspace, Sydney and is touring nationally in partnership with Museums & Galleries of NSW.

Top right Eugenia Lim, *The People's Currency* [2017], performance, Anne & Gordon Samstag Museum of Art, University of South Australia, 2019. Photo by Daniel Marks. Presented as part of *The Ambassador*, a 4A Centre for Contemporary Asian Art and Museums & Galleries of NSW touring exhibition.

Middle left Curator Emily McDaniel speaking at the *Void* Education Symposium, Bathurst Regional Art Gallery, 2019. Photo by Vanessa Low. An exhibition curated by Emily McDaniel, in conjunction with UTS Gallery and Bathurst Regional Art Gallery, presented nationally by Museums & Galleries of NSW.

Middle right David Griggs, *BETWEEN NATURE & SIN*, installation view at Orange Regional Gallery, 2019. A Campbelltown Arts Centre exhibition presented nationally by Museums & Galleries of NSW.

Bottom right Eugenia Lim, *The Ambassador*, installation view at Riddoch Art Gallery, Mount Gambier, 2020. Photo by Tim Rosenthal. A 4A Centre for Contemporary Asian



Exhibitions Touring Nationally in 2019

Angelica Mesiti Relay League

Relay League represents the most ambitious exhibition to date by internationally renowned Australian artist Angelica Mesiti. *Relay League* was filmed during Mesiti's residency at the Centre National de la Danse in Paris and was created specifically for Artspace, Sydney.

Arlo Mountford Deep Revolt

Working across video, sculpture and drawing, Arlo Mountford's practice questions our individual and collective memories of the artistic canon. Curated by Gina Mobayed, Director, Goulburn Regional Art Gallery, the exhibition features selected video works tracing a gradual distillation of the artist's ideas and offers an amusing and thought-provoking journey through the annals of art history.

David Griggs BETWEEN NATURE AND SIN

David Griggs explores the darker undercurrents of human existence. His work, predominately portraiture, focuses on the human condition; drawing on political imagery, underground media, local histories and personal experience. Developed by Campbelltown Arts Centre, *BETWEEN NATURE AND SIN* brings together key works produced during this time and is the first major Australian survey of this leading artist's practice.

Eugenia Lim The Ambassador

This 4A Centre for Contemporary Asian Art and M&G NSW initiated touring project presents Eugenia Lim's most recent body of work, *The Ambassador* series. In this three-part project, Lim takes on a Mao-like persona who sits halfway between truth and fantasy – dressed in a gold lamé suit and matching bowl haircut. Throughout each of her works, the Ambassador takes on new roles in uncovering the Australian-Asian narrative – drilling down into racial politics, the social costs of manufacturing and the role of architecture in shaping society.

Moving Histories // Future Projections

Moving Histories // Future Projections brings together some of Australia's leading female contemporary artists working across screen-based media including Kate Blackmore, Mikala Dwyer and Justene Williams, Amala Groom, Deborah Kelly, Joan Ross, Soda Jerk and Angelica Mesiti. A dLux Media Arts exhibition curated by Kelly Doley and Diana Smith of collaborative group Barbara Cleveland.

People Like Us

People Like Us captures universal aspects of the contemporary human condition in film, animation, digital and interactive art. In a diverse collection of recent new media works by Australian and international practitioners, the exhibition also reveals the many experimental technologies being deployed by artists as they comment on issues confronting us in the 21st century. Curated by Felicity Fenner, former Director, UNSW Galleries, the national tour of *People Like Us* successfully concludes M&G NSW's National Touring Initiative, a four year Australian and State and Territory Government funded project.

Soft Core

Soft Core presents artistic practices that explore the many facets of 'softness' – from large-scale inflatables to forms made from soft materials to materials that simply look soft. The exhibition presents existing and newly commissioned works by a diversity of artists such as Patricia Piccinini, Louise Weaver, Tony Oursler, Kathy Temin, Michael Parekowhai and Todd Robinson and was curated by Micheal Do, in conjunction with Casula Powerhouse Arts Centre.

Tracey Moffatt & Gary Hillberg Montages: The Full Cut, 1999-2015

Montages: The Full Cut 1999–2015 presents the full suite of eight montage films by artist Tracey Moffatt and collaborator Gary Hillberg. Presented together for the first time, the exhibition spans 16 years of the artist and editor's collaborative practice and includes their most recent work, *The Art* (2015). The exhibition is an ode to cinema and to the cinematic form, offering unprecedented insight into the stereotypes that populate our collective cultural imagination. Curated and developed by Artspace, Sydney.

Void

Void explores the multiple ways in which artists visually articulate the unknown as space, time and landscape and brings together contemporary Aboriginal artistic practice from across the country. Curated by Emily McDaniel in conjunction with UTS Gallery and Bathurst Regional Art Gallery, the exhibition features existing works across a



Top Arlo Mountford, *Deep Revolt*, installation view, Shepparton Art Museum, 2019. Photo by Serena Hunt. A Goulburn Regional Art Gallery and Museums & Galleries of NSW touring exhibition.

Middle Arlo Mountford, *Deep Revolt*, installation view, Goulburn Regional Art Gallery, 2018. Photo by Silversalt. A Goulburn Regional Art Gallery and Museums & Galleries of NSW touring exhibition.

Bottom Angelica Mesiti, *Relay League*, installation view at Orange Regional Gallery, 2019. *Relay League* was curated and developed by Artspace and is touring nationally with Museums & Galleries of NSW.

Opposite *Soft Core*, installation view, Shepparton Art Museum, 2018. Pictured: Kathy Temin, *Pet Tomb: Roger* and *Pet Tomb: Gizelle*, 2014; Simon Yates, *The Foam Corps* series, 2016. An exhibition curated by Micheal Do, in conjunction with Casula Powerhouse Arts Centre and toured by Museums & Galleries of NSW. Photo by Serena Hunt.

Next page *Void* Education Symposium at Bathurst Regional Art Gallery, 2019, supported by International Arts Services and Charles Sturt University Community-University Partnership Grant. An exhibition curated by Emily McDaniel, in conjunction with UTS Gallery and Bathurst Regional Art Gallery, *Void* is presented nationally by Museums & Galleries of NSW. This project has been assisted by the Australian Government's Visions of Australia program. Photo by Vanessa Low.





Exhibitions in Development in 2019

Just Not Australian

Just Not Australian brings together a group of 20 living Australian artists across generations and mediums to deal broadly with the origins and implications of contemporary Australian nationhood. This timely thematic show will look to showcase the common sensibilities of satire, larrikinism and resistance in order to interrogate and interpret presenting and representing Australian identity. Curated and developed by Artspace, Sydney, the Sydney Festival and M&G NSW.

Material Sound

Material Sound brings together six contemporary artists who each create an experience of sound within installations and apparatus constructed from everyday materials. Curated by Dr Caleb Kelly and developed by the Murray Art Museum Albury, *Material Sound* features newly commissioned work by artists Vicky Browne, Pia van Gelder, Caitlin Franzmann, Peter Blamey, Ross Manning, and Vincent and Vaughan Wozniak-O'Connor, whose work and practice investigates sound and materials within art and performance.

Mel O'Callaghan Centre of the Centre

Centre of the Centre is a major new commission that traces the origins of life and its regenerative forces, iterated through video, performance and sculpture. The Australian-born, Paris-based contemporary artist works across film, performance, installation and painting. This ambitious new commission offers O'Callaghan an opportunity to further explore her ever-expanding fields of influence and demonstrates the remarkable range of her artistic practice. The exhibition is co-commissioned by Le Confort Moderne, Poitiers; Artspace, Sydney; and The University of Queensland Art Museum, Brisbane.

Vernon Ah Kee The Island

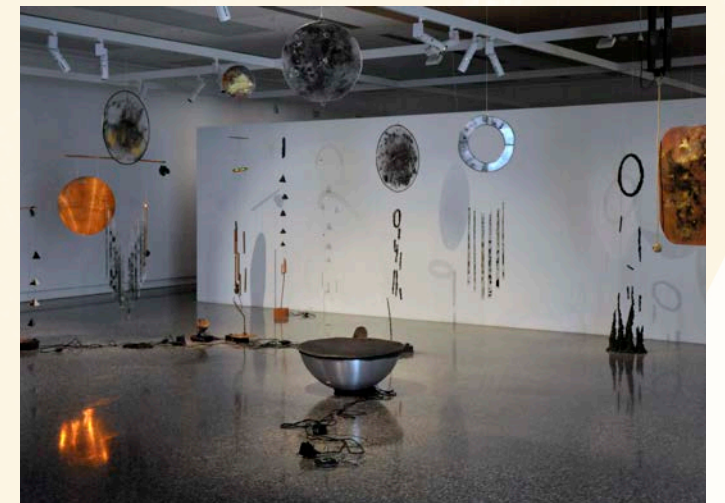
Vernon Ah Kee is one of the most prominent and important contemporary artists practicing in Australia today. Often utilising tongue-in-cheek and wordplay, his practice ranges from large-scale renderings of his family members to multimedia installations with impacting text, sculptural elements, and moving image works. Curated by Campbelltown Arts Centre this major survey examines the significant political impact of Ah Kee's contemporary art practice.

Suspended Moment

Suspended Moment brings together current and past work by the three recipients of *Suspended Moment: The Kathy Cavaliere Fellowship* and formative work by Kathy Cavaliere loaned from her estate. Curated specially for tour by Daniel Mudie Cunningham, Director Programs, Carriageworks in conjunction with the Australian Centre for Contemporary Art and Museum of Old and New Art, the exhibition will comprise work by Giselle Stanborough, Frances Barrett and Sally Rees, the three recipients of this prestigious fellowship. A selection of work by Kathy Cavaliere will be presented alongside the three artists who have benefited from her generous legacy.

Zanny Begg These Stories Will be Different

Once described as an advocate for women and marginalised communities, Zanny Begg's work incorporates film, drawing and installation and is highly collaborative. Begg explores themes of gender, activism and migration and the ways in which we can live and be in the world differently. This exhibition, curated by UNSW Galleries and designed for tour, brings together the artist's most significant works to date including *The Beehive* (2018), *City of Ladies* (2017) and a new work *Stories of Kannagi*, (2019).



Top left Cultural Mediation in Practice workshop featuring Mel O'Callaghan's exhibition *Centre of the Centre* and performance *Respire, Respire*, 2018. Photo: Document Photography

Top right Caitlin Franzmann, *Drawn Together, Held Apart*, 2017, custom made table with inbuilt surface transducer speaker, LED lighting, proximity speakers, audio. Installation view, Murray Art Museum Albury, 2018. Courtesy the artist. *Material Sound* is a Murray Art Museum Albury exhibition, curated by Caleb Kelly and presented nationally by Museums & Galleries of NSW. Photo by Tyler Grace.

Middle left Zanny Begg, *Stories of Kannagi*, 2019, 15mins, single channel HD video. Commissioned by STARTTS (Service for the Treatment And Rehabilitation of Torture and Trauma Survivors) and created in collaboration with members of the Tamil community in Western Sydney.

Middle right *Material Sound*, installation view at Murray Art Museum Albury, 2018. Pictured: Vicky Browne, *Cosmic Noise* [detail], 2016-2018, stoneware ceramics, electronics, glass, laser toner powder, foil, wood, copper, reeds, rope, leather, metal. Courtesy the artist and Galerie Pompom, Sydney. Photo by Jules Boag. A Murray Art Museum Albury exhibition, curated by Caleb Kelly and presented nationally by Museums & Galleries of NSW.

Left Installation view, *Just Not Australian*, Artspace, Sydney, 2019. Left: *exotic OTHER*, 2009, found vintage ephemera and vinyl, 3.3 x 5.8m. Courtesy the artist and Sullivan+Strumpf, Sydney and Singapore. Collection of Tom Snow, courtesy of Annette Larkin Fine Art, Sydney. Right: *I Waz 'Ere* (with Heath Ledger), 2012, type-c prints on metallic paper mounted on aluminium, 9 panels, each 83cm x 64 cm. Courtesy the artist and Milani Gallery, Brisbane. Photo by Zan Wimberley. *Just Not Australian* was curated by Artspace and developed in partnership with Sydney Festival and Museums & Galleries of NSW. The exhibition is touring nationally with Museums & Galleries of NSW.

Engaging Art

2019 was the final year of the Australia Council funded Engaging Art Initiative – a pilot program trialling new models of audience engagement and support for regional galleries, helping them reach new audiences. Launched in early 2017, M&G NSW worked with four regional galleries across Australia to develop new public programming aligned with two of our touring exhibitions – *Soft Core* and *Montages: The Full Cut 1999–2015*. The Initiative worked directly with galleries and their unique communities to grow visitation, participation and engagement, as well as visual arts awareness and opportunities for artists.

In early 2019 Caboolture Regional Art Gallery in QLD were supported to deliver a Professional Educator Series in tandem with *Soft Core*, they also received tailored PR support as part of the initiative. The suite of public programs included an exclusive exhibition preview with curator Micheal Do, workshops and professional practice seminars in the gallery and local high schools with Sydney-based artists Tully Arnot, Simon Yates, and Koji Ryui and a Visual Arts Masterclass with Brisbane-based artist Simone Eisler.

Throughout the year three new resources were developed and released as part of Engaging Art; *Design Approaches to Digital Projects - A Beginners Guide*, *Digital Engagement: Connecting with your audience*, and the *Digital Suppliers List for Museums & Galleries*.

In October M&G NSW convened a wrap-up roundtable of the venues, artists and curators involved in the initiative - this roundtable was invaluable in terms of sharing experiences and ideas for the future. Participating regional galleries were enthusiastic in their praise for the initiative, for example Caboolture Regional Art Gallery reported that without the support they would not have been able to afford the artists engaged to facilitate their Professional Educators' program, and therefore trial this new and successful model, which they are continuing to roll out into the future.

Through detailed reporting, feedback and research much has been learnt during this pilot initiative, informing new Engaging Art programs such as the Cultural Mediation in Practice workshop, Regional Cultural Mediation workshops and new Engaging Art resources. M&G NSW continues to build upon this work and further develop capacity and skills, whilst delivering new programs and activities alongside our touring exhibition program.



Top Engaging Art Initiative - Wrap-up Roundtable participants, October 2019.

Bottom Cultural Mediation in Practice workshop, 2019, with Marion Buchloh-Kollerbohm (Palais de Tokyo, Paris); Mel O'Callaghan (Contemporary Australian Artist); Lee Casey and Ellie Michaelides (Science Gallery Melbourne); and Emily Sullivan (Kaldor Public Art Projects). Photo by Document Photography. Mel O'Callaghan's *Centre of the Centre* was curated and developed by Artspace and is touring nationally with Museums & Galleries of NSW.

Opposite Engaging Art Initiative - *Soft Core* artist Koji Ryui undertaking workshops at Caboolture Regional Art Gallery. Photo: Simon Woods.





Jeremy Kruckel (Wagga Wagga Art Gallery)
undertaking his Mentorship at the Art Gallery
of NSW. Photo by Vanessa Low.

Professional Development

In 2019 the Fellowship, Mentorship and Volunteer Placement Program provided professional development opportunities to museum and gallery staff, and museum volunteers in NSW. The grants supported one fellowship, six mentorships and two volunteer placements.

Helen Brackin

Norfolk Island Museums and Research Centre

- Fellowship at the Museum of New Zealand Te Papa Tongarewa, National Services Te Paerangi

Ali Haigh

Manning Regional Art Gallery

- Mentorship at the Art Gallery of NSW

Bethany Holland

Norfolk Island Museums and Research Centre

- Mentorship at Sydney Living Museums, House Museum Portfolio

Cecilie Knowles

Orange Regional Gallery

- Mentorship at the Museum of Contemporary Art, Australia

Jeremy Kruckel

Wagga Wagga Art Gallery

- Mentorship at the Art Gallery of NSW

Bree Rooney

Newcastle Museum

- Mentorship at Sydney Living Museums, House Museum Portfolio

Julianne Salway

Goulburn Mulwaree Council

- Mentorship at the Anzac Memorial in Hyde Park

Dr Diane Westerhuis

Camden Haven Historical Society Museum

- Volunteer placement at the NSW State Archives & Records

Leonie Lane

New Italy Museum In

- Volunteer placement at Albury LibraryMuseum

“It’s like going back to school to learn all the practical things you will actually use.... It’s intense and you learn so much, but at the same time it’s a lot of fun and in the end, it just makes your own job much easier.”

- Jeremy Kruckel, Wagga Wagga Art Gallery



“The professional conversations and experiences I undertook as part of the mentoring program at the AGNSW were invaluable to me to stimulate and build individual skills in regards to arts and cultural programming for the Manning Regional Art Gallery...”

- Ali Haigh, Manning Regional Art Gallery

Grants & Funding

Audience Development Fund (ADF)

In its fourth year the ADF grant program devolved **\$45,000 across five public galleries** in NSW supporting projects that focus on priority areas including people living in regional NSW, people living in Western Sydney, culturally and linguistically diverse people, people living with disability and young people.

In 2019 grants were awarded to:

- Goulburn Regional Art Gallery
- Northern Rivers Community Gallery
- The Lock-Up
- UNSW Galleries
- UTS ART

Dobell Exhibition Grant

The Dobell Exhibition Grant of \$40,000, funded by the Sir William Dobell Art Foundation, was awarded to Murray Art Museum Albury (MAMA) for their proposed exhibition *Notes from the Field*, which will explore the practice of fieldwork as a vital creative process by examining ways artists deploy fieldwork to undertake research, formulate ideas and express creativity. The project is a collaboration between MAMA and the Bogong Centre for Sound Cultures [B-CSC].

Newcastle Art Gallery (NAG) held their Dobell Exhibition Grant supported exhibition *SODEISHA: connected to Australia* from 2 March – 19 May 2019. Featuring ten

contemporary ceramic artists from Australia and Japan alongside the gallery's Sodeisha collection, the exhibition formed a dialogue between this important post war avant-garde movement and contemporary ceramic arts practice today.

Australian artists included Alterfact Studio, Penny Byrne, Juz Kitson, Julie Bartholomew, Kenji Uranishi & Kristina Chan. From Japan artists included Takashi Hinoda, Satoru Hoshino, Yusaku Ishida, Rokube Kiyomizu and Hideo Matsumoto.

A highlight of the exhibition was the visit of revered Japanese ceramic artist Satoru Hoshino, an original member of the Sodeisha group and exhibitor in the 1979 show from which the NAG collection derived. He installed his major installation *Beginning Form – Spiral '17, 2017* and conducted a series of masterclasses, providing a living link to the past and present of the Sodeisha group both in Japan and Australia.

The gallery also commissioned *Crawling Through Mud* a contemporary performance by award winning Australian choreographer and performer Kristina Chan, developed in collaboration with Newcastle-based contemporary dance organisation Catapult Dance Choreographic Hub. This sold-out event was inspired by the 1955 performance *Challenging Mud* by Kazuo Shiraga, a member of the Kyoto based Gutai Artists Association who challenged ideas about the relationship between elemental materials and the human body, a key provocation for the Sodeisha movement.



A variety of activities from Murray Art Museum Albury's Culture Connect program. Supported by the Audience Development Fund, a Create NSW devolved funding program, administered by Museums & Galleries of NSW. Photo courtesy of Murray Art Museum Albury.

In 2019, the Volunteer Museum Grants program received 49 applications and awarded \$78,808 to 40 museums from 31 local government areas.

Leg Up Grants

In 2019, the Leg Up Grants program allowed museum volunteers and staff to attend training and networking events. There were four applications received and funded, with matched funding by the applying museum.

Skills Development Grants

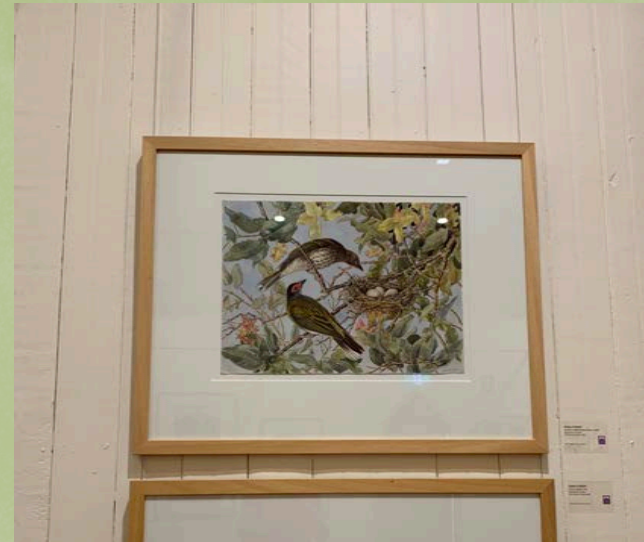
In 2019, the Skills Development Grants program allowed for volunteer museums and museum networks to run a wide range of different skills development training and networking events. There were four applications received and funded, these included training for disaster planning, collection management and recording oral histories.

Small Grants

The Small Grants program funded a wide range of projects in 2019, these include collection management, display cases, digital displays and conservation. Twenty six applications for Small Grants were successful.

Project Development Grants

Project Development Grants support long term strategic projects, in 2019 these included exhibition development, significance assessments, preservation needs assessments and strategic plans. Six applications for Project Development Grants were successful.



Top row Workshop at Armidale Folk Museum, funded by a Leg Up Grant; Jindera Pioneer Museum project, funded by a Small Grant; Iluka Museum archival project, funded by a Small Grant.

Middle row Yamba Museum art hanging system, funded by a Small Grant; new UV filter film installed at Armidale Folk Museum, funded by a Building Development Grant.

Bottom Row Detail of baptismal font which received a Small Grant for restoration (Moruya Museum); new touch screen installed for visitors at Thredbo Alpine Museum, funded by a Small Grant; digitisation at Lawrence Museum, funded by a Small Grant.

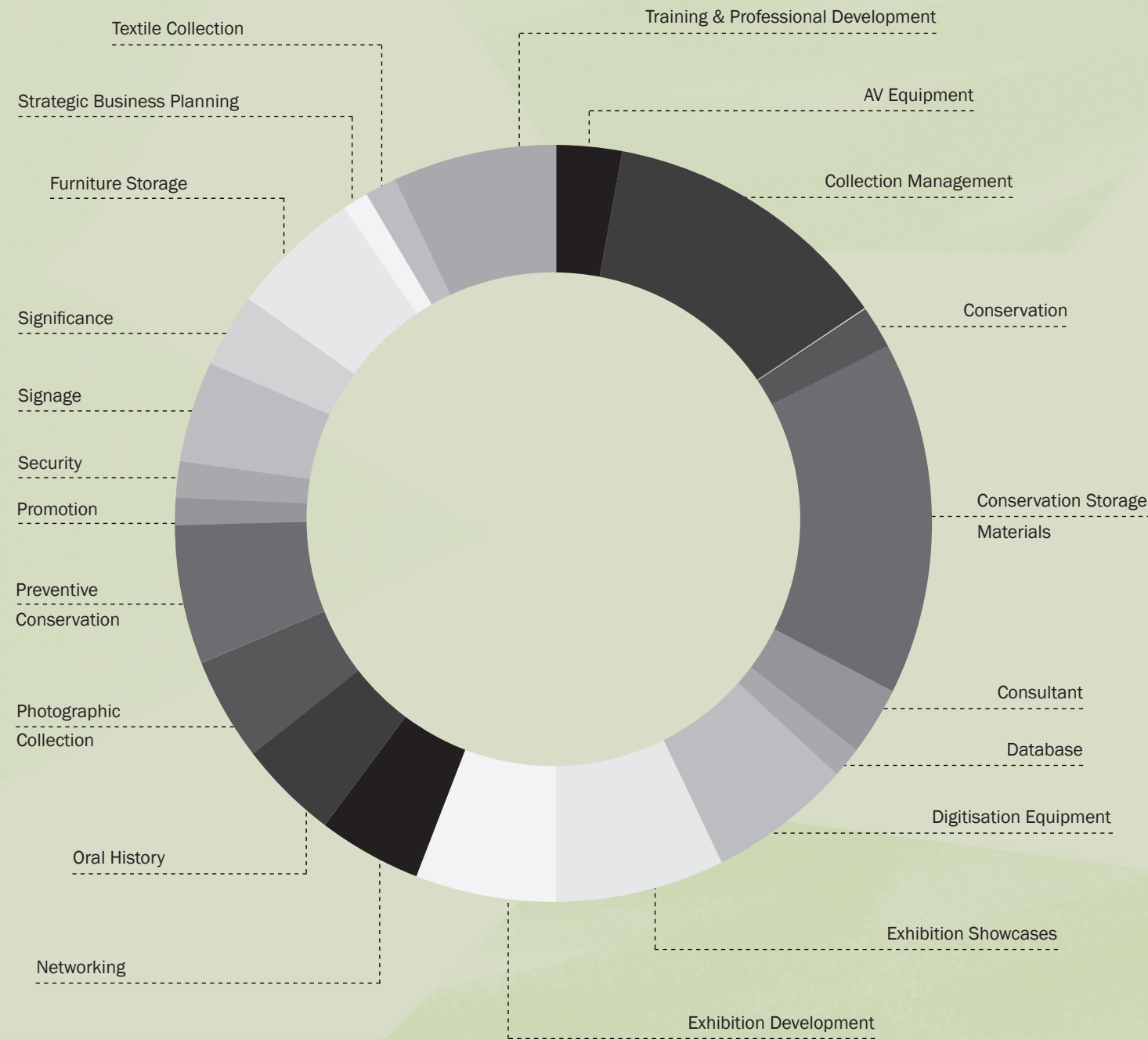
Next page New glass barrier installed at Oberon Museum around its ceramic streetscape, funded by a Small Grant.



Handmade Series
Oberon Street in the 1930's
 In 1987, with the help of Keith Cole and other older day care
 seniors, Oberon street scenes inspired their model. Back 50
 years, using their memories and old photos, they started
 building.
 Photos: Alan Phillips (cars, barns, animals, woodstoves),
 Joanne, Debbie, Ross - over 2000 pieces in total

Lisa Bailey	Eileen Connell	Brenda Lynn
Sandra Bartlett	Edie Dennis	Mavis
Mary Blatman	Jill Evans	Judy Richards
Julie Knowles	Liz Perry	Bessie Stillwell
Rosemary Bigden	Ray Hawken	Emma Whalan
Kay Carter	Lucia Koff	Bill Whitton
Terry Carter	Alma Lewis	Meg Worthington
	Pauline Lewis	

Successful Grants by Category



Kristina Chan, *Crawling Through Mud*, 2019. Performance as part of *Sodeisha: Connected to Australia* at Newcastle Art Gallery, recipient of the Dobell Exhibition Grant, supported by the Sir William Dobell Art Foundation and managed by Museums & Galleries of NSW. Photography: Alison Laird & Ashley de Prazer



Regional Museum Advisors Program

Supporting 70 museums/collecting organisations in 17 local government areas, the Museum Advisor program continued to support and assist the work of around 700 volunteers through the provision of advice and specialist skills. In 2019, the program ran in the following local government areas:

- Albury City Council & Greater Hume Shire [2 LGA]
- Bega Valley Council
- Bland Shire Council
- Blue Mountains City Council
- Broken Hill City Council
- Clarence Valley Council
- Cobar Shire Council
- Eurobodalla Shire Council
- Lithgow City Council
- Lockhart Shire Council
- Narrandera Shire Council
- Shoalhaven City Council
- Tenterfield Shire Council
- Snowy Valleys Council
- Sutherland Shire Council
- Wollongong City Council

Significant outcomes from the 2019 program included exhibition development and interpretation projects, building repairs/ improvements, capital works projects, development of disaster plans, development and review of strategic plans, cataloguing and deaccessioning projects, collection rehousing projects, collection relocation projects, skills development in collections management, documentation, significance assessment, disaster preparedness and response, object conservation, reorganisation of displays and storage areas.



Standards visit to Armidale Folk Museum, 2019.
Photos by Vanessa Low.



Standards Review Program

In its 13th year the Standards Program ran as a non-regional model, working with four museums and galleries, to examine their practices and policies and work together to align them with the Australian standards for public museums and galleries. The program engaged with 30 volunteers to strengthen their practices and the ongoing sustainability of their organisations.

- Armidale Folk Museum, Armidale
- Bank Art Museum Moree, Moree
- New Italy Museum, New Italy
- Old School Museum, Merimbula

IMAGinE awards

In partnership with RPG NSW, AMaGA (NSW), and the Museum of Applied Arts and Sciences, M&G NSW presented the 12th annual IMAGinE Awards in November 2019. We received 76 nominations from across 50 volunteer run and paid staff organisations in NSW, with 13 awards announced across the four categories of Exhibition Projects, Engagement Programs, Capacity Building, Capital & Sustainability Programs and Individual Achievement. In addition, this year the Aboriginal Culture, Heritage & Arts Association (ACHAA) presented a special award for an individual for Outstanding Contribution to Aboriginal Arts, Culture and/or Heritage in NSW.

Exhibition Projects – Galleries

Volunteer organisations or organisations with 2 or less paid staff: Bega Valley Regional Gallery - *South/East Interference Vol.2*

Small/medium organisations with 3-10 paid staff: Hazelhurst Arts Centre - *Weapons for the soldier: protecting country, culture and family*

Large organisations with 11 or more paid staff: Museum of Contemporary Art Australia - *John Mawurndjul: I am the old and the new*

Exhibition Projects – Museums

Volunteer organisations or organisations with 2 or less paid staff: Berrima District Museum - *A Butcher A Baker A bunch of Makers*

Small/medium organisations with 3-10 paid staff: Orange Regional Museum - *All in a Day's Work*

Large organisations with 11 or more paid staff: Museum of Applied Arts and Sciences - *Akira Isogawa*

Engagement Projects

Volunteer organisations or organisations with 2 or less paid staff: The Lock-Up - *ARGO PACIFICO KIDS CLUB*

Small/medium organisations with 3-10 paid staff: Broken Hill Regional Art Gallery - *FRESHbark*

Large organisations with 11 or more paid staff: State Library of NSW and DX Lab - *#NewSelfWales*

Capacity Building, Capital & Sustainability Programs

Less than \$100,000: Bathurst Regional Art Gallery - *RE-ORG Bathurst*

More than \$100,000: Parramatta Artists' Studios - *Expansion of Parramatta Artists' Studios with new artists' studio facility in Rydalmere*

Individual Achievement: Volunteer

Marea Buist President, Port of Yamba Historical Society / Yamba Museum

Individual Achievement: Paid

Lee-Anne Hall Former Director, Penrith Regional Gallery & The Lewers Bequest

ACHAA Award for Outstanding Contribution to NSW Aboriginal Arts, Culture & Heritage

Hubert 'Laddie' Timbery (1924-2019)



Opposite and next pages IMAGinE Awards 2019 event at the Powerhouse Museum. Photos by Silversalt.



Communications

Website

A refresh of the M&G NSW website was launched after having been ported to a new Content Management System, featuring a revised design and functionality.

The M&G NSW website continued to deliver highly regarded information, opportunities and resources to the sector.

In 2019, there were 344,987 visits to the website; with 241,212 unique users and 682,601 page views, an increase of 6% on the previous year. Visitors from NSW made up 62.5% of all traffic, a 2.5% increase on the previous year.

Overall the website traffic (visits) decreased by 1.2% (4,322) on the previous year, due in part to the new website removing public facing content.

The website maintained a listing of 480 museums, galleries and Aboriginal cultural centres across NSW. These pages continue to be the only web presence and contact point for many smaller organisations. The listings received 172,376 page views, an increase of 9.35% on the previous year

Publishing

Through 2019 M&G NSW continued to publish our fortnightly e-newsletter Alert. It featured sector news articles, jobs, resources, grant information and professional development opportunities.

The sector news articles received 43,139 page views.

Online Resources

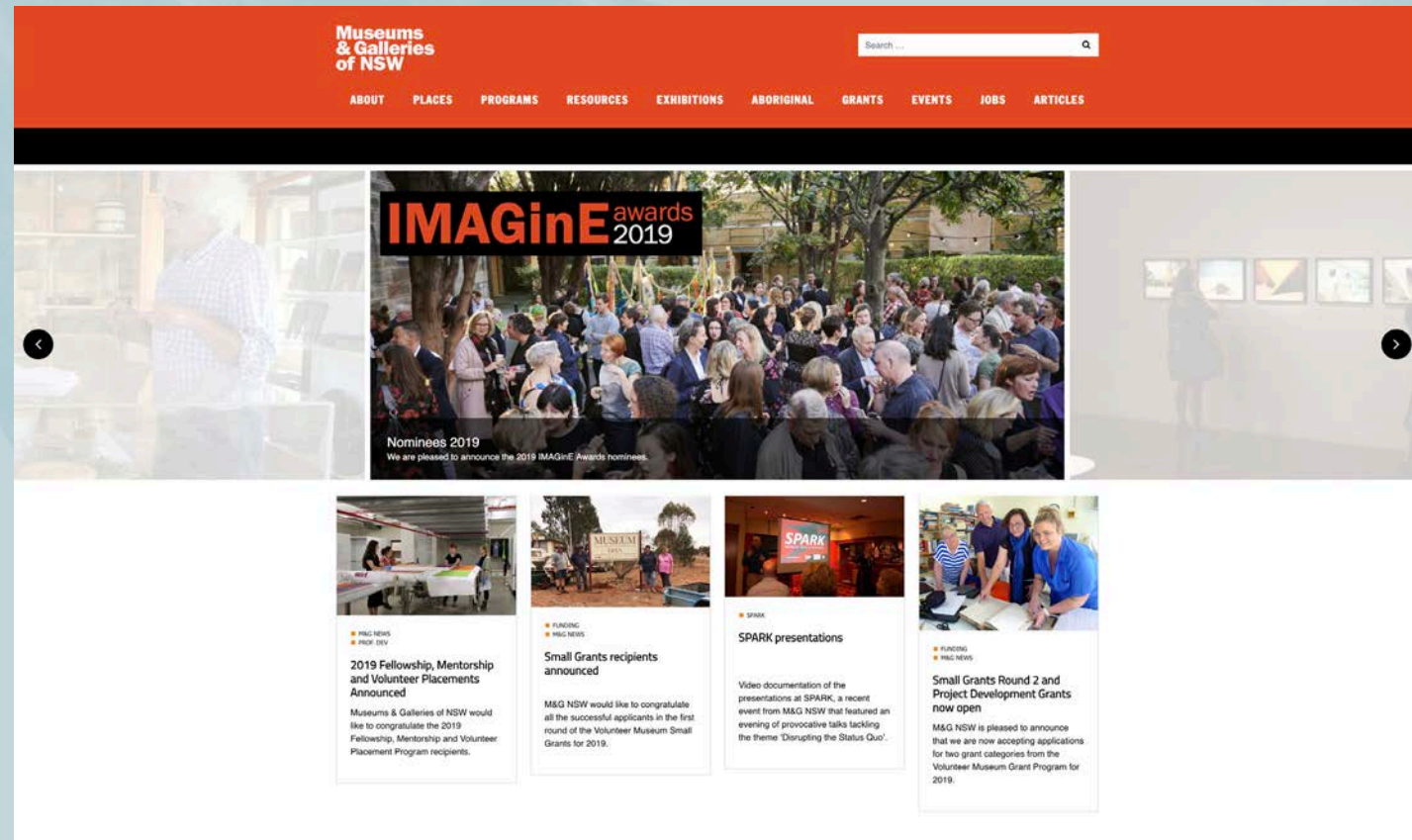
In 2019 M&G NSW developed a variety of online resources including 20 video stories and interviews, 158 articles and 17 sector resources. Our sector resources pages received 94,300 page views, an increase of 4,322 (5%) from the previous year.

ALERT e-newsletter

	2019	2018
Number of subscribers	3,751	3,154
Number published	22	22

Social Media

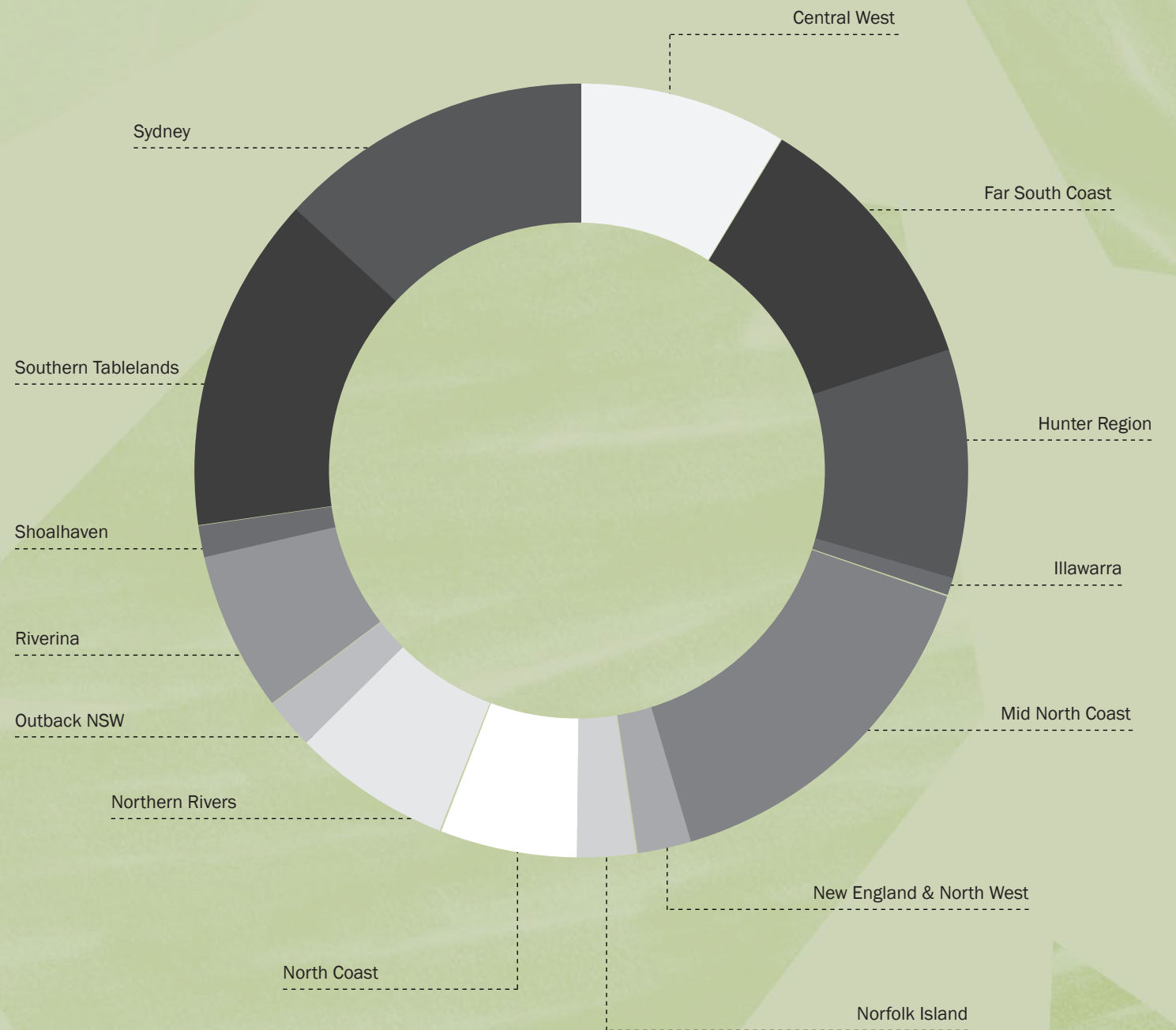
Facebook	Twitter	Instagram
3,197 fans	4,513 followers	1,840 followers
401 new fans	39 new followers	351 new followers



The homepage of the refreshed Museums & Galleries of NSW website

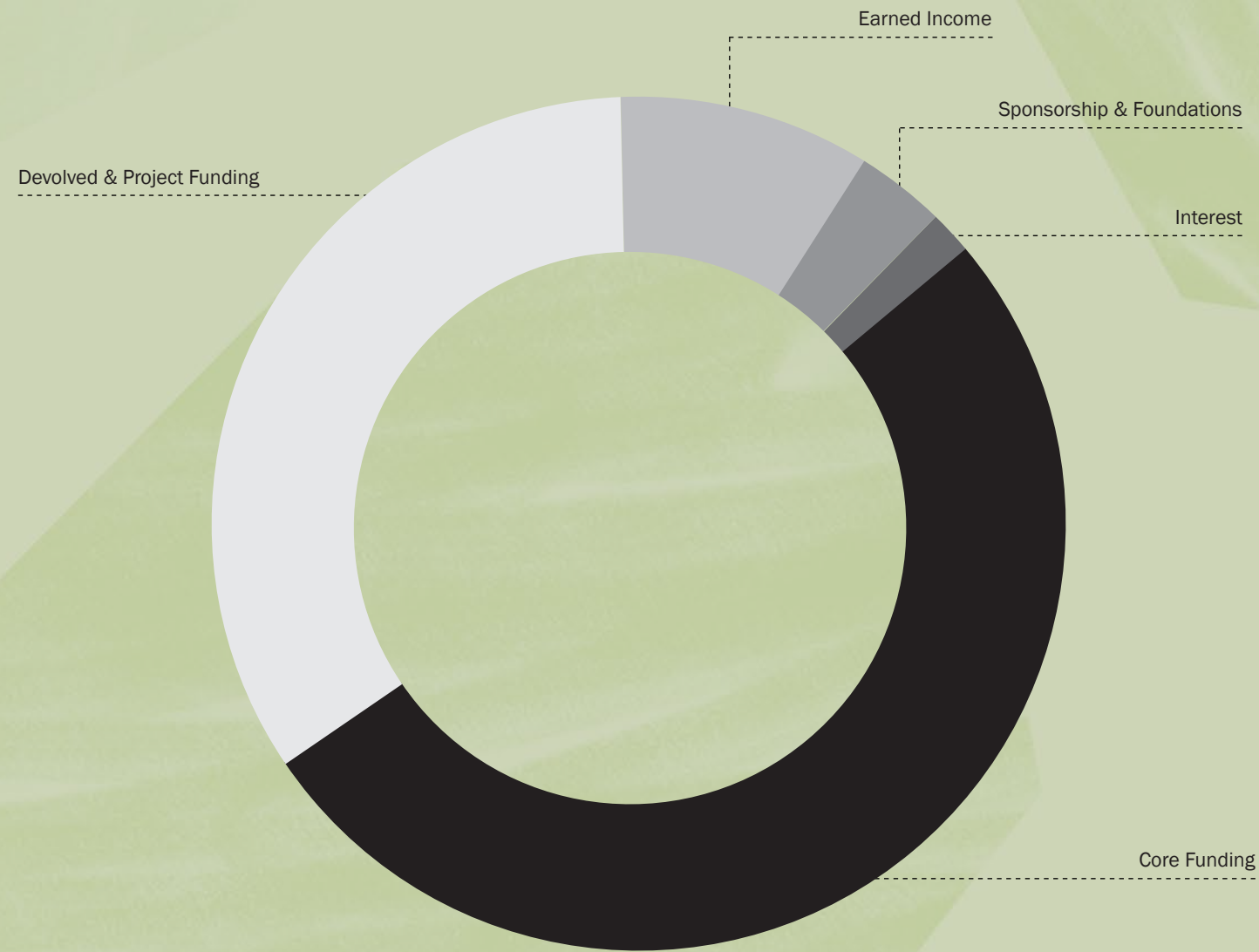
Finances

Devolved Funding by Region



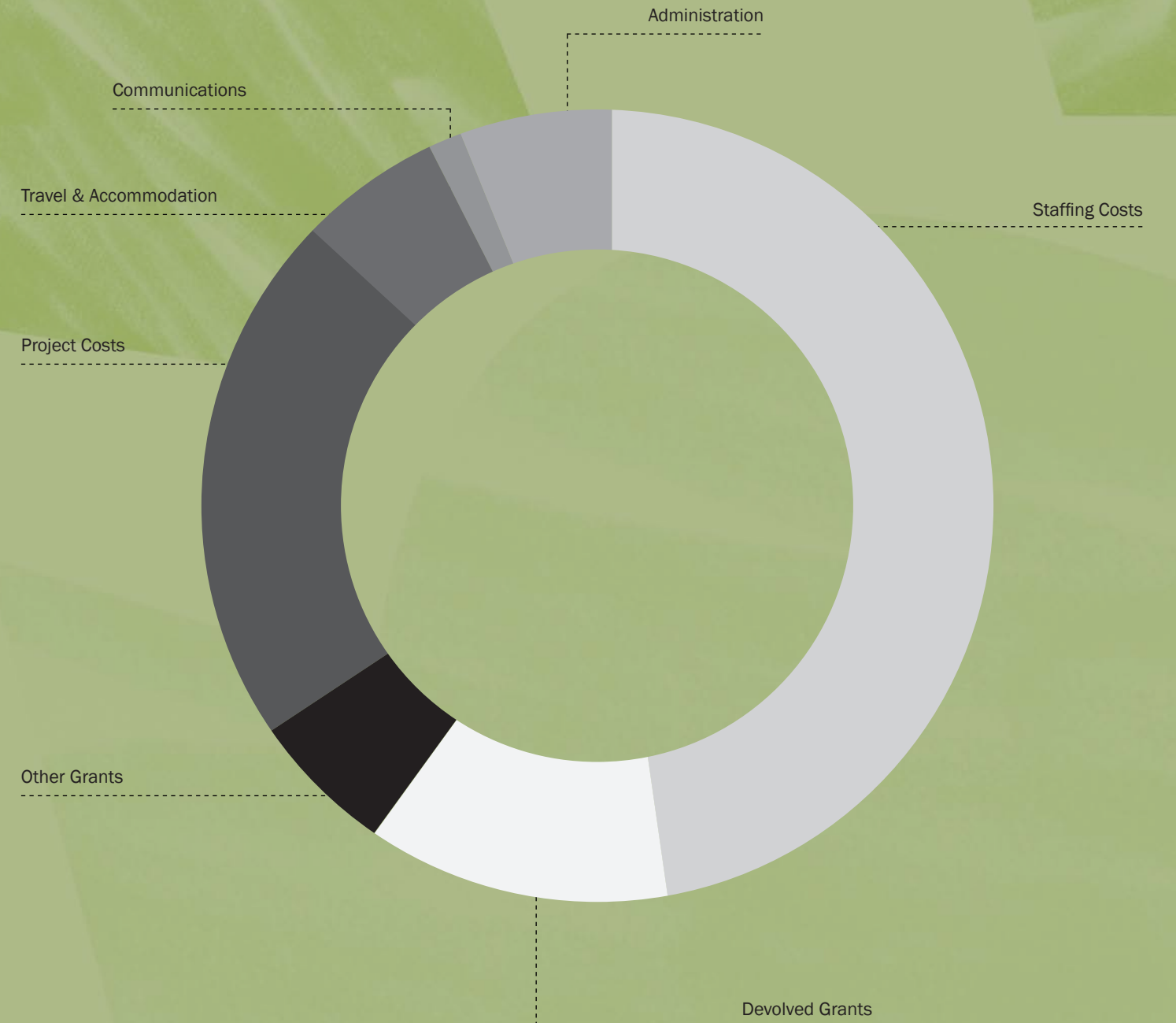
Finances

Income



Finances

Expenses



Museums & Galleries of NSW

Level 1, 10 Hickson Road
The Rocks NSW 2000

WEB mgnsw.org.au

PHONE 02 9252 8300

EMAIL info@mgnsw.org.au



Museums & Galleries of NSW is supported by the NSW Government through Create NSW and is assisted by the Australian Government through the Australia Council, its arts funding and advisory body.